

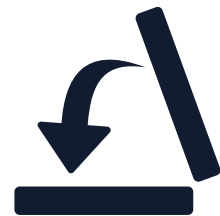
BOLERO LITE

Volume Evaluation

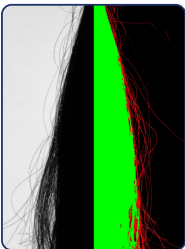


Fly-away & Frizz Analysis

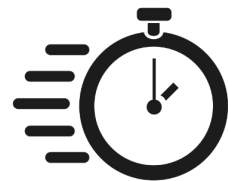
Foldable
setup



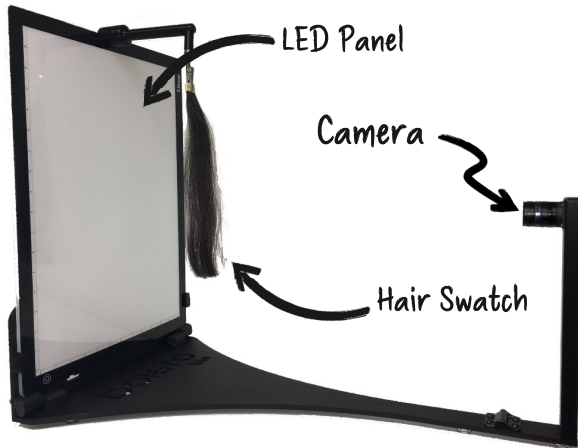
Bulk & Frizz
Separation



Fast
analysis



Hair swatches are not easy to analyze due to their composition from a multitude of individual fibers whose boundaries are not well defined. Light transmission analysis techniques are a solution to analyze hair swatches geometry and have been widely used in the cosmetic industry to address the needs regarding volume measurements and frizz analysis.



BOLERO Lite is an imaging system dedicated to quickly and efficiently **discriminate fly-away/frizz frizz fibers from the bulk** of hair swatches on a 2D image using light transmission variations to evaluate hair density. Its design ensure a portability, efficiency and precision in the measurements for an optimal user experience.

SPECIFICATIONS

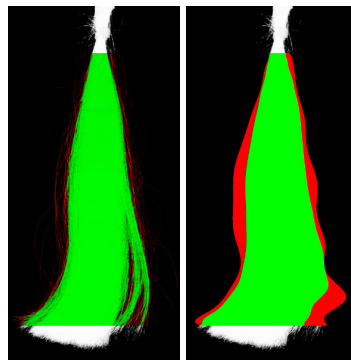
VISION	Monochrome (B & W) 8-bits depth 2400 x 1480 px ² resolution 300 x 185 mm ² FOV LED Illumination panel
HAIR SWATCH	Any color Length from 5 to 25 cm Typical hair weight = 20 grams
SOFTWARE	BOLERO 4.35 or higher
ACQUISITION	Measurement time < 2 sec
DATA	Surface of swatch % of Fly-Away/Frizz Black/White Raw Images Processed Images Excel Export
SYSTEM	Size open : 27" x 15" x 20" (70 cm x 38 cm x 51 cm) Size folded : 27" x 15" x 3,5" (70 cm x 38 cm x 7,5 cm) 110/220 VAC 50/60 Hz

BOLERO LITE SOFTWARE

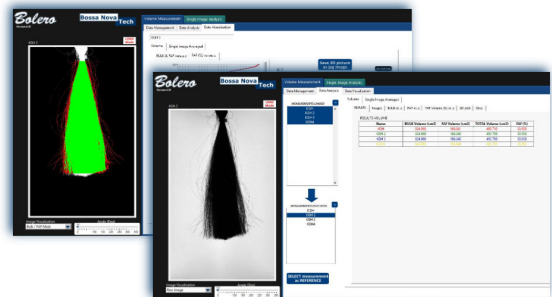
Based on the acquisition of a contour image of a swatch, BOLERO LITE delivers a 2D analysis of the hair swatch, provides a visual surface measurement as well as a fly-away/frizz analysis.



Raw Image



Processed Images
Bulk & Fly-away



Using the BOLERO Software, you can easily :

- Acquire your images with a simple study organization system
- Get an extensive analysis on the volume and frizz properties of your hair samples
- Compare multiple samples
- Export all your data including images, graphs and tables